

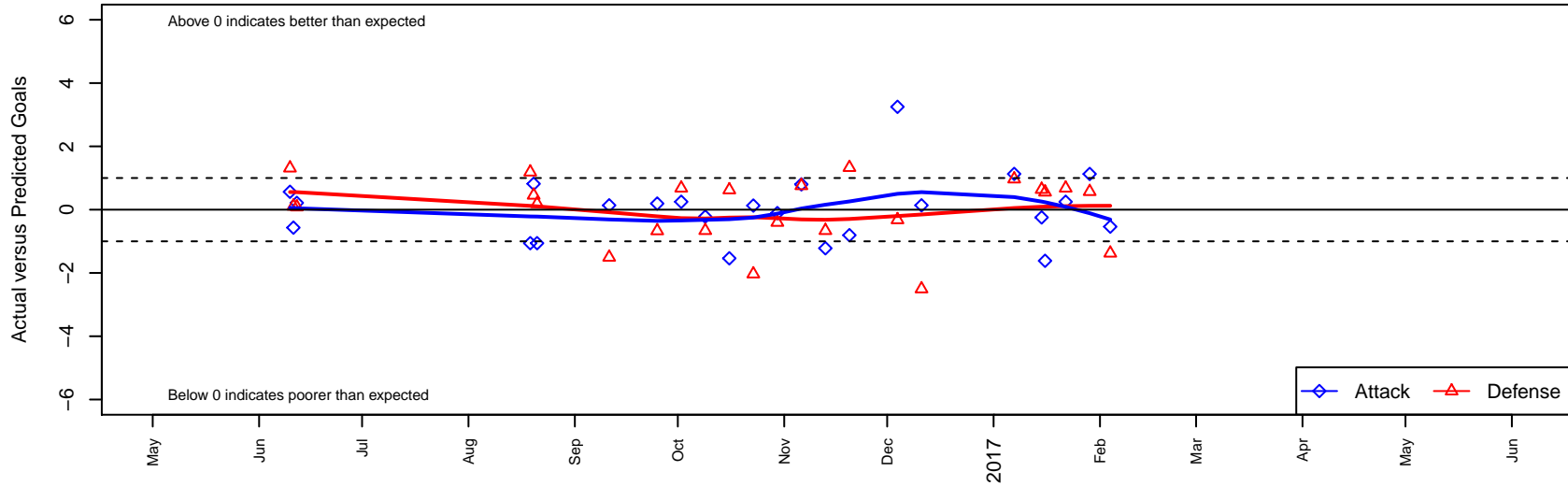
Seattle United S Black B00

Seattle United Regional
 Seattle, WA
 B00 total strength=1377
 attack=7.69 defense=7.08
 fall league = NPSL Div 1 (00) U17
 notes= Cobb 2015-6

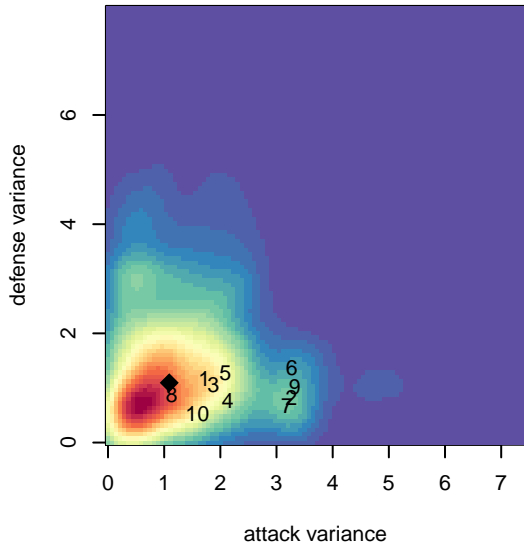
alt names used:
 Seattle United South B00 Black
 Seattle United South Black
 Seattle United B00 Black
 Seattle United South B00 Black

Venues played:
 2016 Starfire Spring Classic BU17
 2016 Xtreme Cup BU17
 2016 NPSL Division 1 (00) U17
 2016 Founders Cup B00 Div A

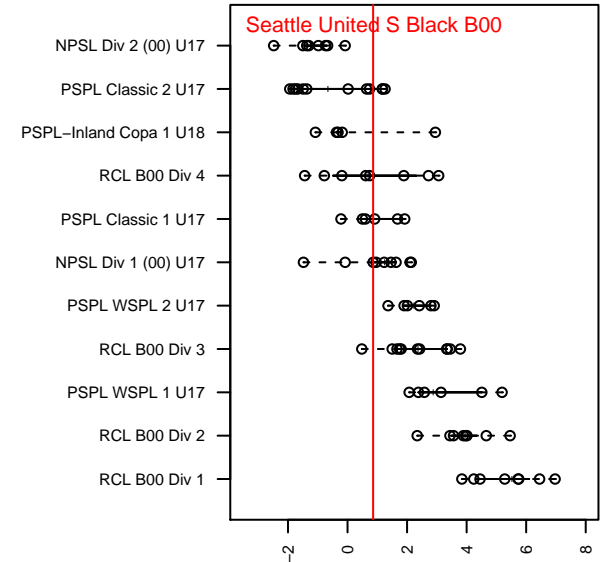
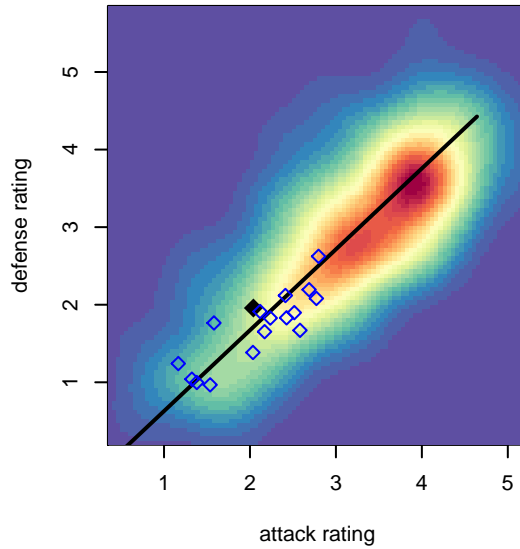
Seattle United S Black B00
 Dots are actual minus expected GF (blue circles) and GA (red triangles).
 Blue line is smoothed change in attack strength. Red is smoothed change in defense strength.



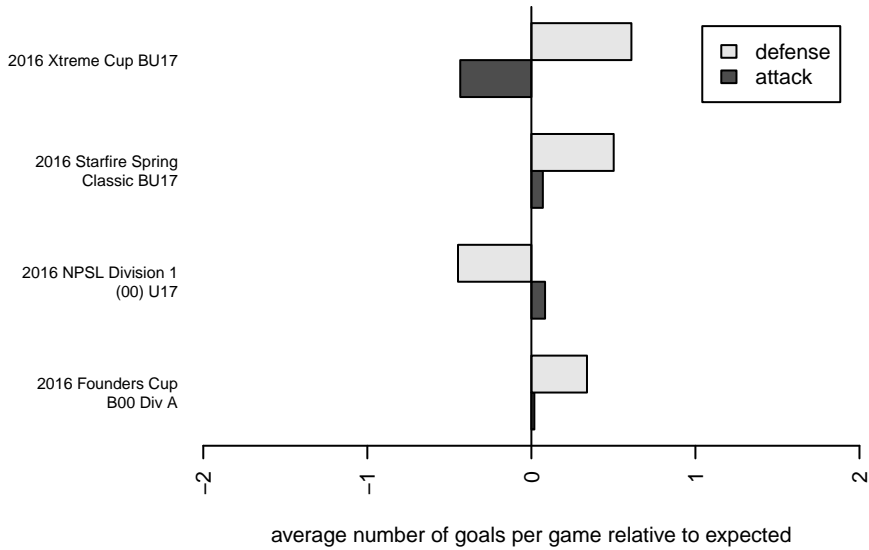
**attack and defense variance (black dot)
relative to other teams
and top 10 in region**



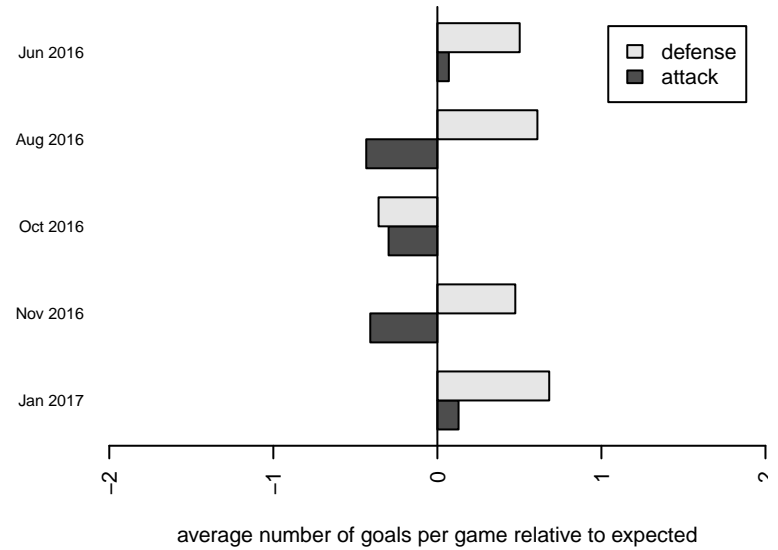
**attack and defense rating
relative to others at age
and all opponents in last 13 months**



Performance relative to 13 month average



Performance relative to 13 month average



| date | home | | away | | venue | pred.home | pred.away |
|-------------|-----------------------------------|---|-----------------------------------|---|-----------------------------------|------------------|------------------|
| 2017-02-04 | Seattle United S Black B00 | 1 | BIFC White B00 | 3 | 2016 Founders Cup B00 Div A | 1.54 | 1.62 |
| 2017-01-29 | Seattle United S Black B00 | 4 | Crossfire Select Elder B00 | 0 | 2016 Founders Cup B00 Div A | 2.87 | 0.57 |
| 2017-01-22 | Seattle United S Black B00 | 3 | Seattle United Shoreline Blue B00 | 0 | 2016 Founders Cup B00 Div A | 2.75 | 0.68 |
| 2017-01-16 | Mercer Island FC Gunners B00 | 0 | Seattle United S Black B00 | 1 | 2016 Founders Cup B00 Div A | 0.55 | 2.62 |
| 2017-01-15 | Seattle United S Black B00 | 1 | Washington Timbers White 1 B00 | 1 | 2016 Founders Cup B00 Div A | 1.25 | 1.64 |
| 2017-01-07 | Crossfire Select Cantrell B00 | 1 | Seattle United S Black B00 | 2 | 2016 Founders Cup B00 Div A | 1.97 | 0.87 |
| 2016-12-11 | NSC Impact B00 | 4 | Seattle United S Black B00 | 1 | 2016 NPSL Division 1 (00) U17 | 1.50 | 0.86 |
| 2016-12-04 | Seattle United Shoreline Blue B00 | 1 | Seattle United S Black B00 | 6 | 2016 NPSL Division 1 (00) U17 | 0.68 | 2.75 |
| 2016-11-20 | Seattle United S Black B00 | 0 | Nortac Colibri B00 | 1 | 2016 NPSL Division 1 (00) U17 | 0.81 | 2.33 |
| 2016-11-13 | Seattle United S Black B00 | 0 | Seattle United W Blue B00 | 2 | 2016 NPSL Division 1 (00) U17 | 1.22 | 1.34 |
| 2016-11-06 | Southlake Select Eagles B00 | 0 | Seattle United S Black B00 | 2 | 2016 NPSL Division 1 (00) U17 | 0.76 | 1.20 |
| 2016-10-30 | Seattle United S Black B00 | 1 | Seattle United S Blue B00 | 2 | 2016 NPSL Division 1 (00) U17 | 1.11 | 1.60 |
| 2016-10-23 | Seattle United S Black B00 | 1 | Crossfire Select Cantrell B00 | 4 | 2016 NPSL Division 1 (00) U17 | 0.87 | 1.97 |
| 2016-10-16 | BIFC White B00 | 1 | Seattle United S Black B00 | 0 | 2016 NPSL Division 1 (00) U17 | 1.62 | 1.54 |
| 2016-10-09 | Seattle United W Blue B00 | 2 | Seattle United S Black B00 | 1 | 2016 NPSL Division 1 (00) U17 | 1.34 | 1.22 |
| 2016-10-02 | Seattle United S Black B00 | 3 | Seattle United Shoreline Blue B00 | 0 | 2016 NPSL Division 1 (00) U17 | 2.75 | 0.68 |
| 2016-09-25 | Nortac Colibri B00 | 3 | Seattle United S Black B00 | 1 | 2016 NPSL Division 1 (00) U17 | 2.33 | 0.81 |
| 2016-09-11 | Seattle United S Black B00 | 1 | NSC Impact B00 | 3 | 2016 NPSL Division 1 (00) U17 | 0.86 | 1.50 |
| 2016-08-21 | Seattle United S Black B00 | 0 | Gala FC B00 | 1 | 2016 Xtreme Cup BU17 | 1.06 | 1.19 |
| 2016-08-20 | WS Fury B00 | 0 | Seattle United S Black B00 | 3 | 2016 Xtreme Cup BU17 | 0.45 | 2.18 |
| 2016-08-19 | Seattle United S Black B00 | 0 | Gala FC B00 | 0 | 2016 Xtreme Cup BU17 | 1.06 | 1.19 |
| 2016-06-12 | Seattle United S Black B00 | 2 | MVP Rapids Navy B00 | 1 | 2016 Starfire Spring Classic BU17 | 1.79 | 1.08 |
| 2016-06-11 | Highline Premier Heat Blue B00 | 2 | Seattle United S Black B00 | 0 | 2016 Starfire Spring Classic BU17 | 2.11 | 0.57 |
| 2016-06-10 | FWFC Blue B00 | 0 | Seattle United S Black B00 | 2 | 2016 Starfire Spring Classic BU17 | 1.31 | 1.44 |